



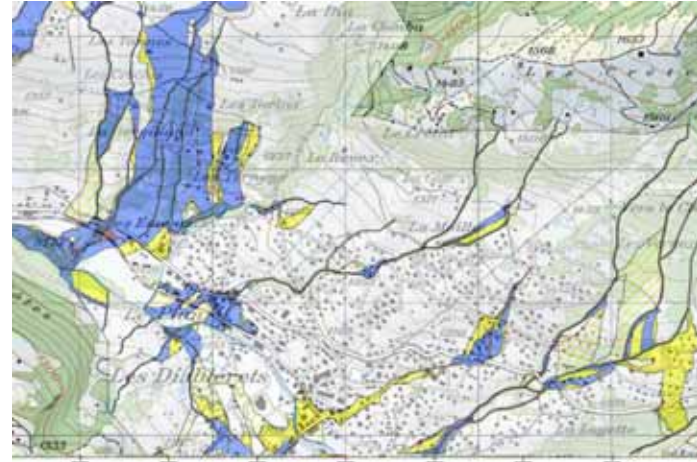
Development opportunities and environmental changes in Les Diablerets

(Juliette, Zar Chi, Roxana)

What natural processes occur in the area? (1/3)

1. FLOODS:

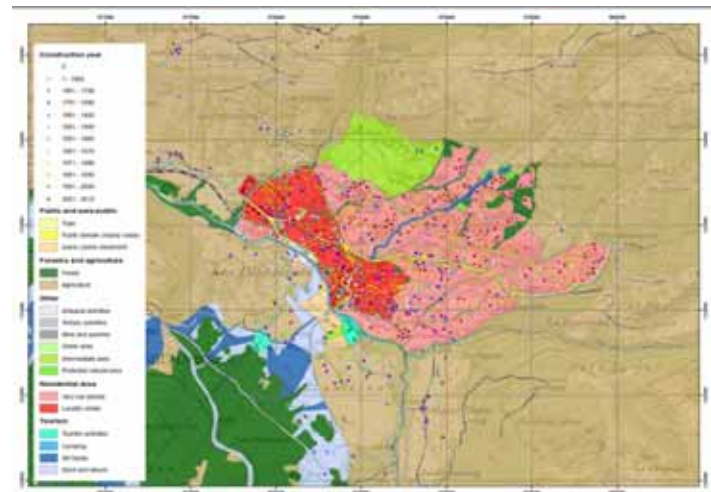
- areal impact
- 2000 – 2009 ~ caused 50% damages
- Last event – June 2005
- Before – locality center in the BLUE hazard zone
- After – locality center in the YELLOW hazard zone (local protection measures)



Vulnerability:

- Residential and touristic buildings located in the vicinity of the river (no hazard area – new map; blue hazard area – old map)

- local protection measures



What natural processes occur in the area? (2/3)

2. SNOW AVALANCHES

- Localized impact
- Historical events in the area: 1984

Vulnerability:

- Very low residential areas, agricultural areas, and protective forest



3. DEBRIS FLOWS

- no information on a large area
- Last event in the area – July 2007

Vulnerability:

- Agricultural areas



What natural processes occur in the area? (3/3)

4. LANDSLIDES (SHALLOW, SLOW MOVEMENTS)

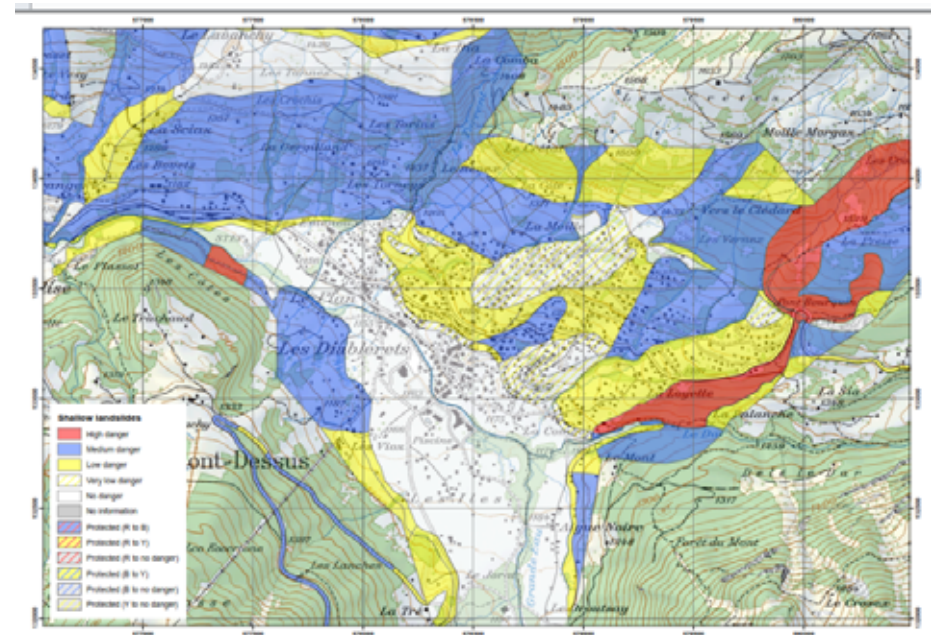
- mostly Yellow AND BLUE hazard areas in the locality center
- Shallow landslides (emerging problem) – small scale land use changes (e.g. track cuts)

Vulnerability:

- locality center, low density residential areas, transportation infrastructure (railroad, local road)

Other hazards:

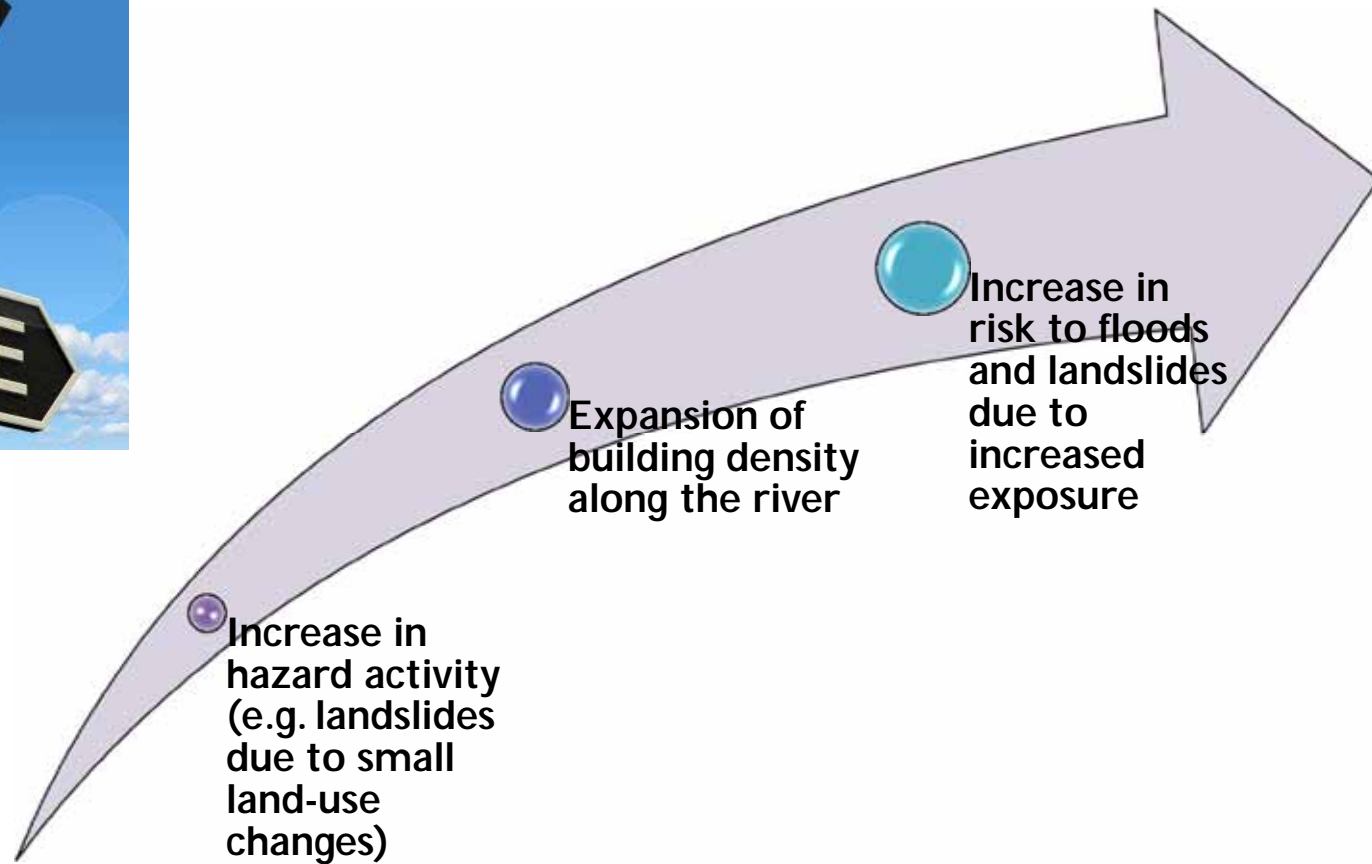
- Rockfalls, subsidence



What are the significant changes in the area?

CHANGE	POSSIBLE CAUSE
Decreasing agricultural activities	Increase of protective forest areas
Increase of touristic activities	Decrease in agricultural production Increase in building stock
Increase on foreigners population	Increase in touristic activities and infrastructure

Trends in changes



Development scenarios

1. Stagnant economic development:

▶ Recommendations:

- Farms of alpacas (wool and therapy with animals)
- Support local agricultural farms

2. Increased economic activity followed by construction of new buildings

▶ Recommendations:

- Local protection measures, hazard resilient buildings
- Shared responsibilities for local protection measures (state-owner)

We think that...

- Development scenarios in Les Diablerets are likely to be more dependent on socio-economic changes rather than environmental changes
- Risk management – responsibility of both state and public
- Effective risk communication about current and future changes

Thank you for your attention!