

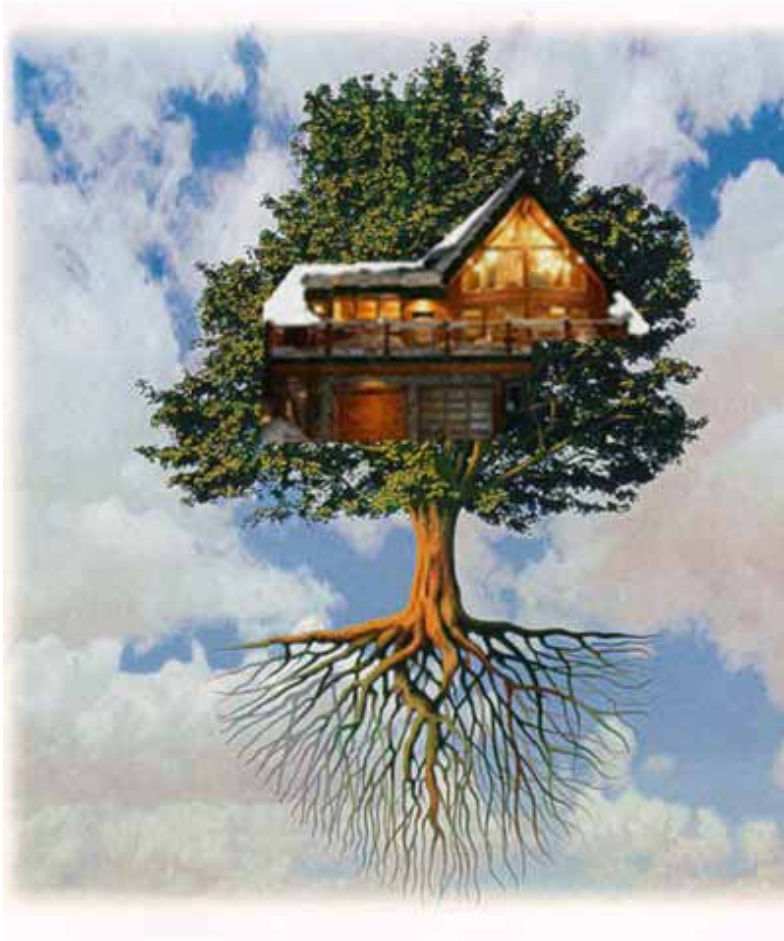


A window to the past....

In the room from the future

Kaixi, Irina & Thea

Treechalet



- For the future
- Genetically engineered
- In one with nature
- Preserves the area for future generations



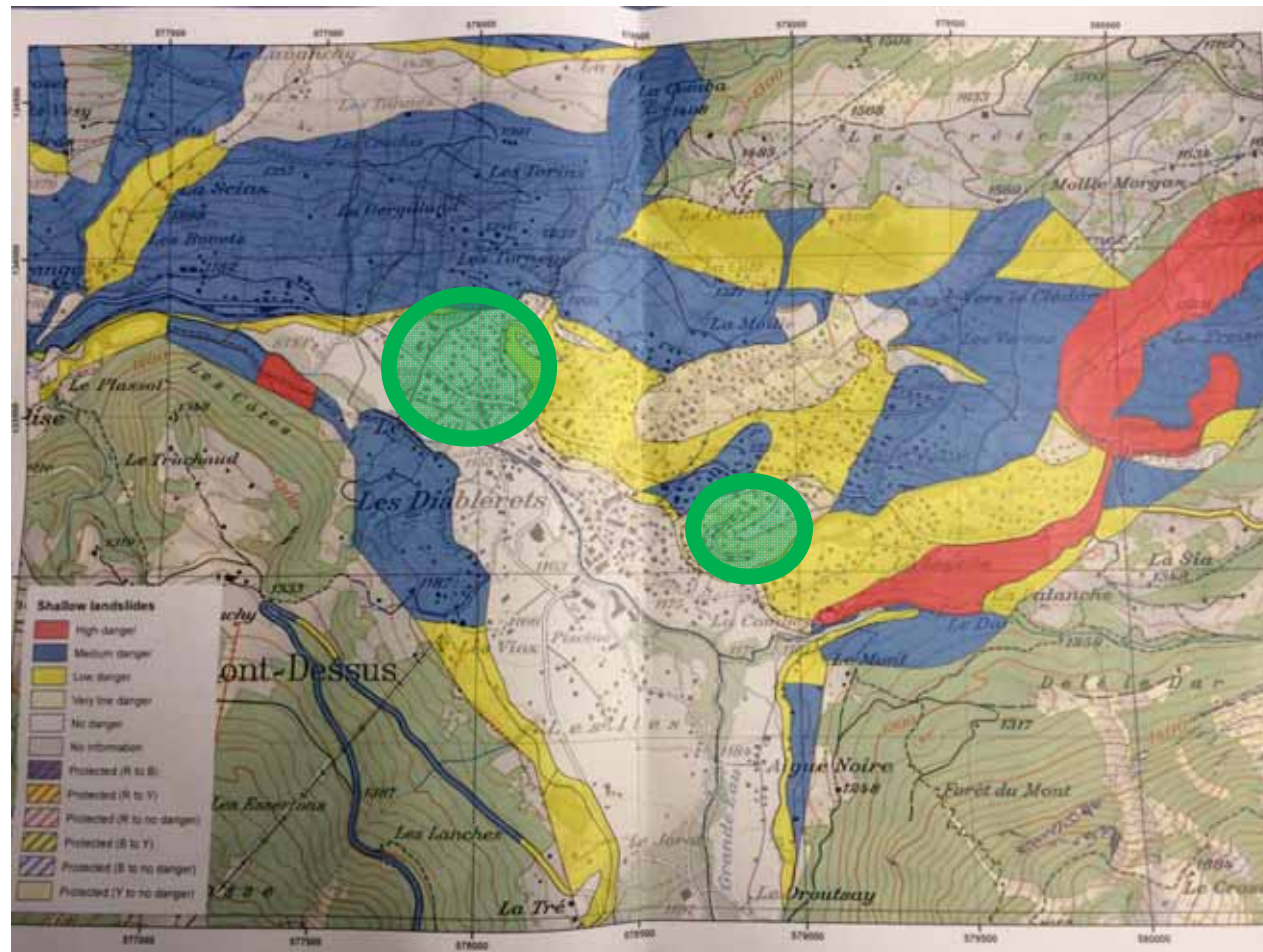
The treechalet:

A 'multi-hazard approach'

- Height of the branches
 - Rock falls
 - Flooding
- Deep roots
 - Slow moving landslides
 - Subsidence
 - Earthquakes
- Fire retardant trees
 - Wild fires
- Still in the first phase, build out of the high risk areas



Planned location phase 1





This is not something completely new....

- Caldera Santorini, Greece



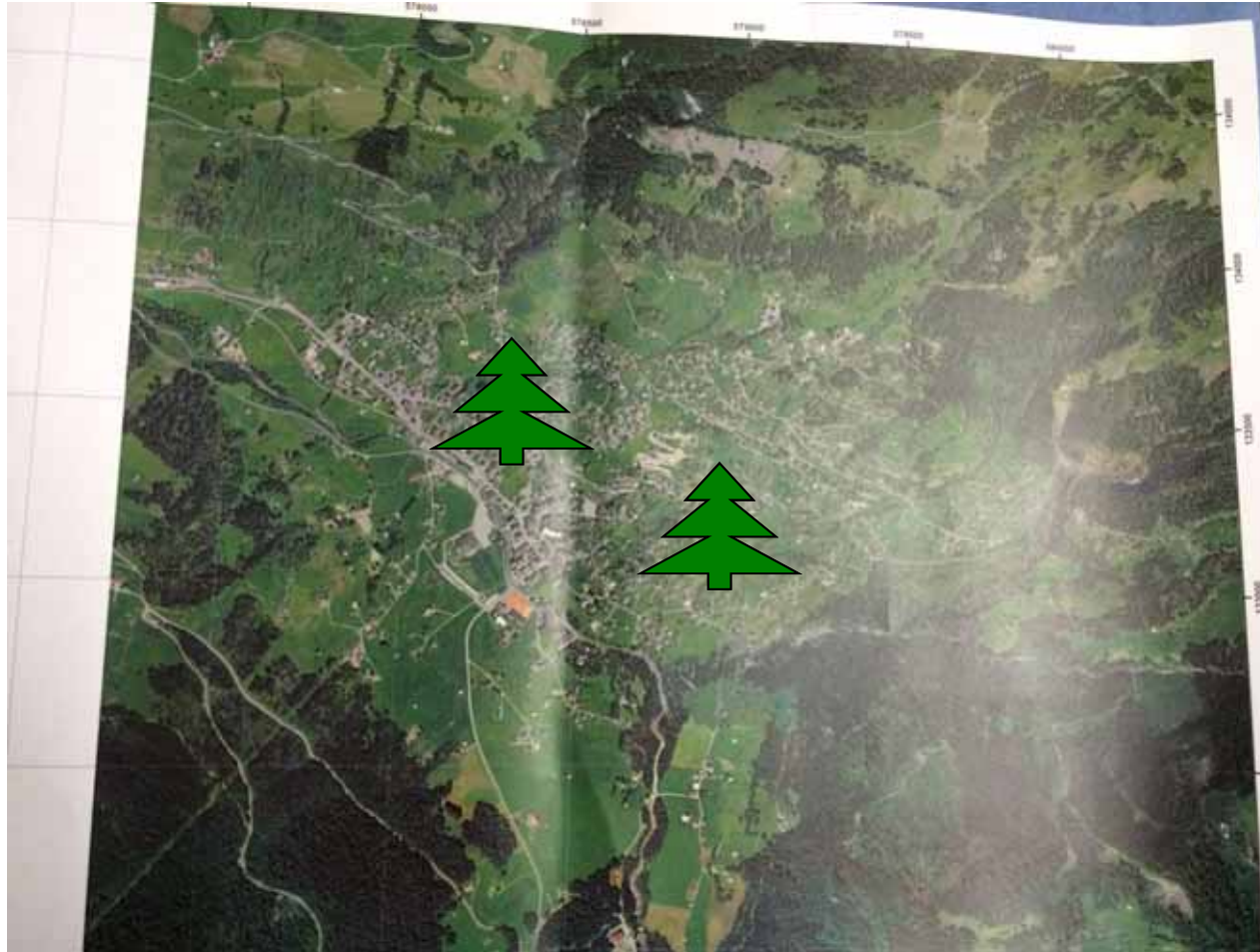


Advantages/Disadvantages

- Disadvantages:
 - High initial R&D costs
 - Seed distribution restriction
 - Cross pollination
 - Rouge wild treechalets
 - Insects (e.g. treechalet beetle)
 - Unknown risks...
- Advantages:
 - Can build in more 'risky' areas
 - Sustainable
 - Promotes living in harmony with the natural world
 - Cost effective long term
 - Connects future and the past
 - Reduce CO₂



What it will look like: 2100



Only a treechalet now....

