

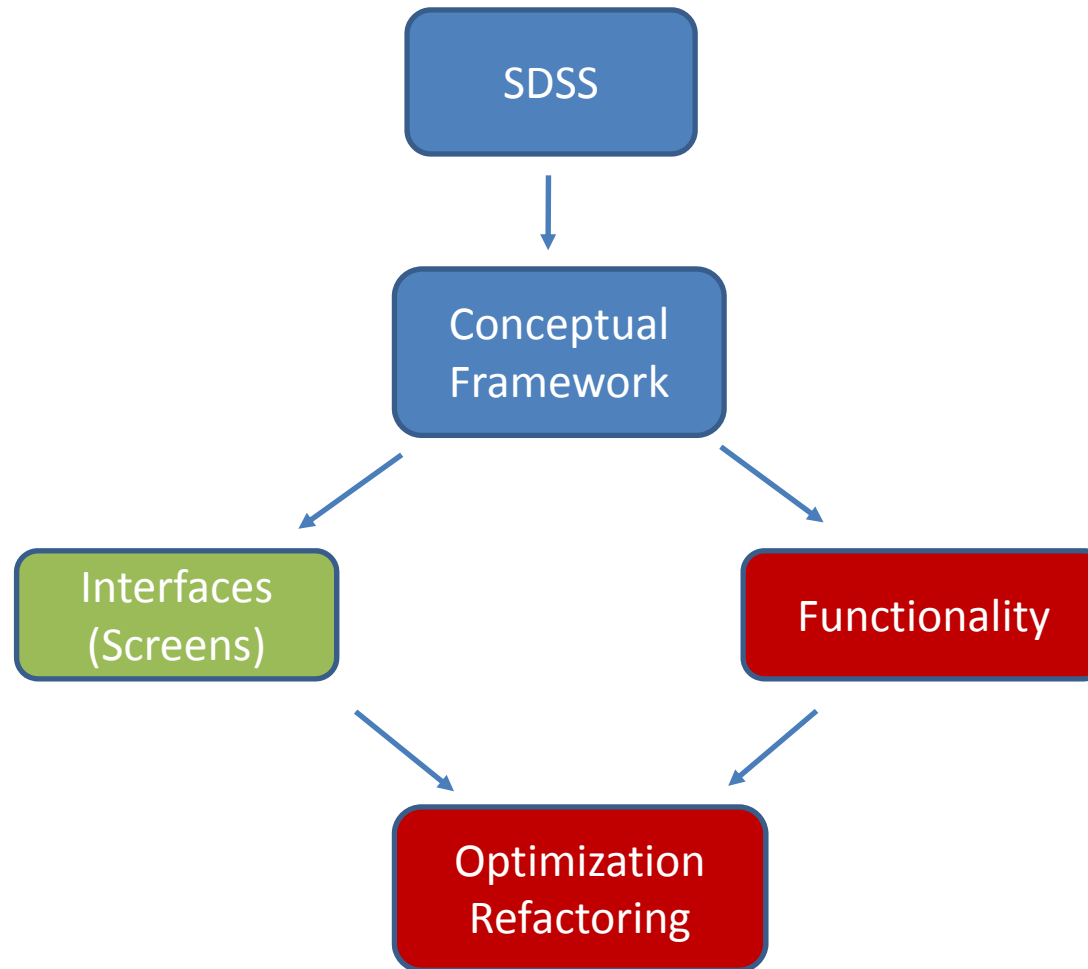


CHANGES SDSS Data Input User Interfaces

ESR 13 - Vera Andrejchenko

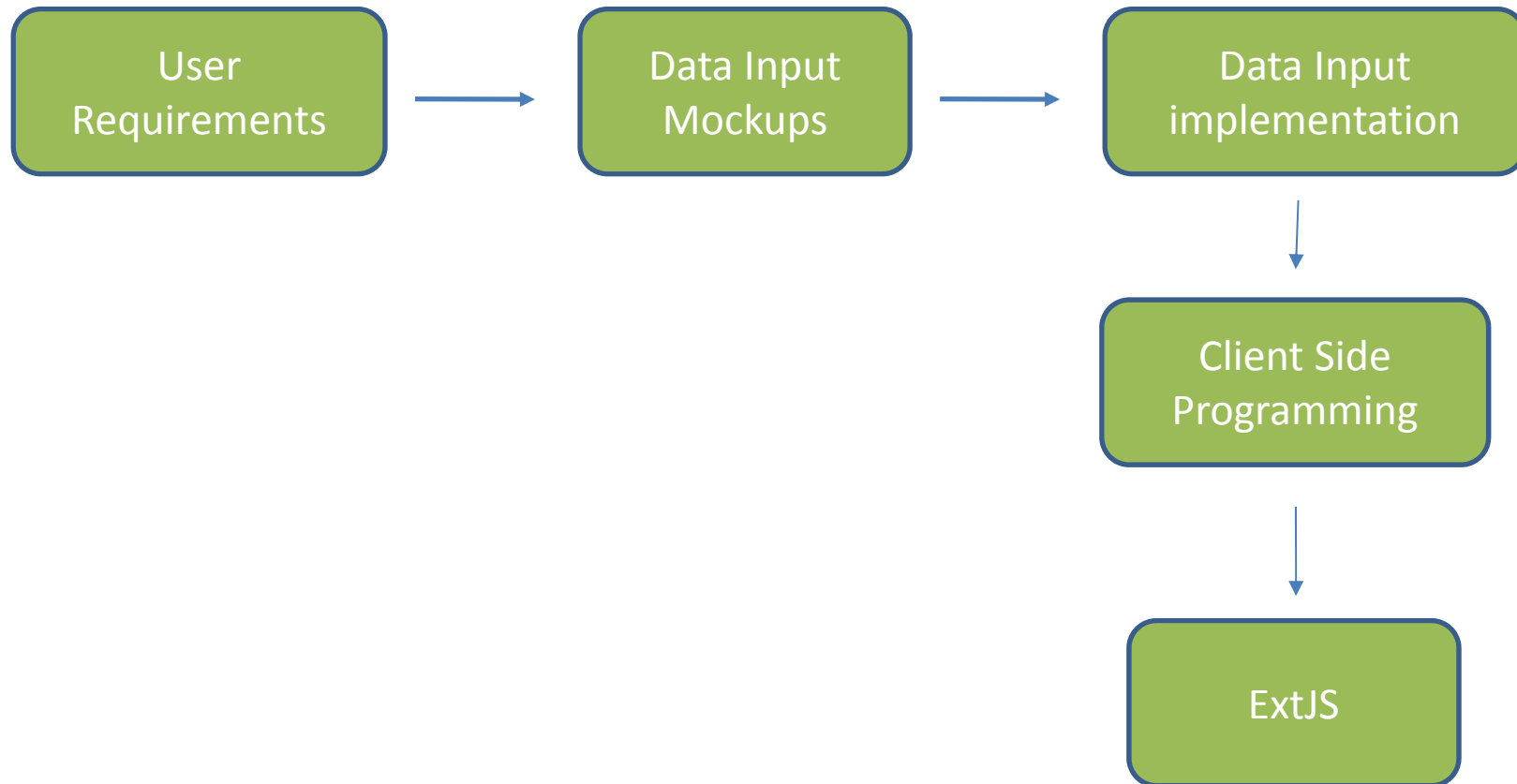
University of Salzburg

Overview



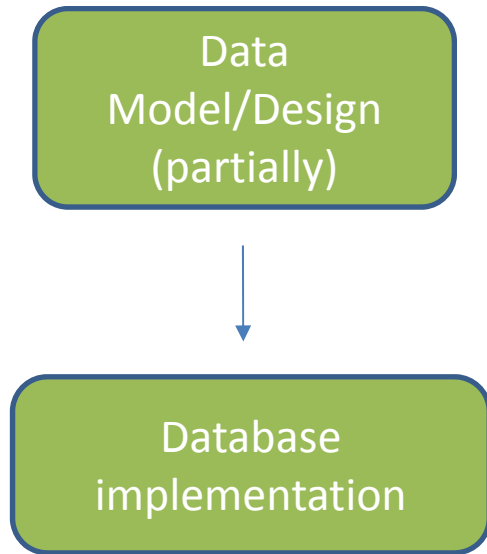
Data Input Interfaces

- So far:

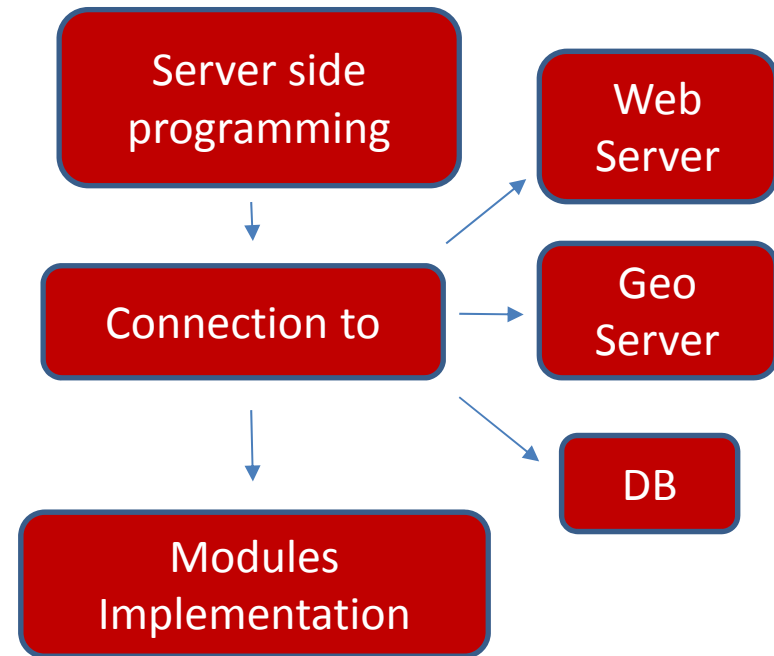


Functionality

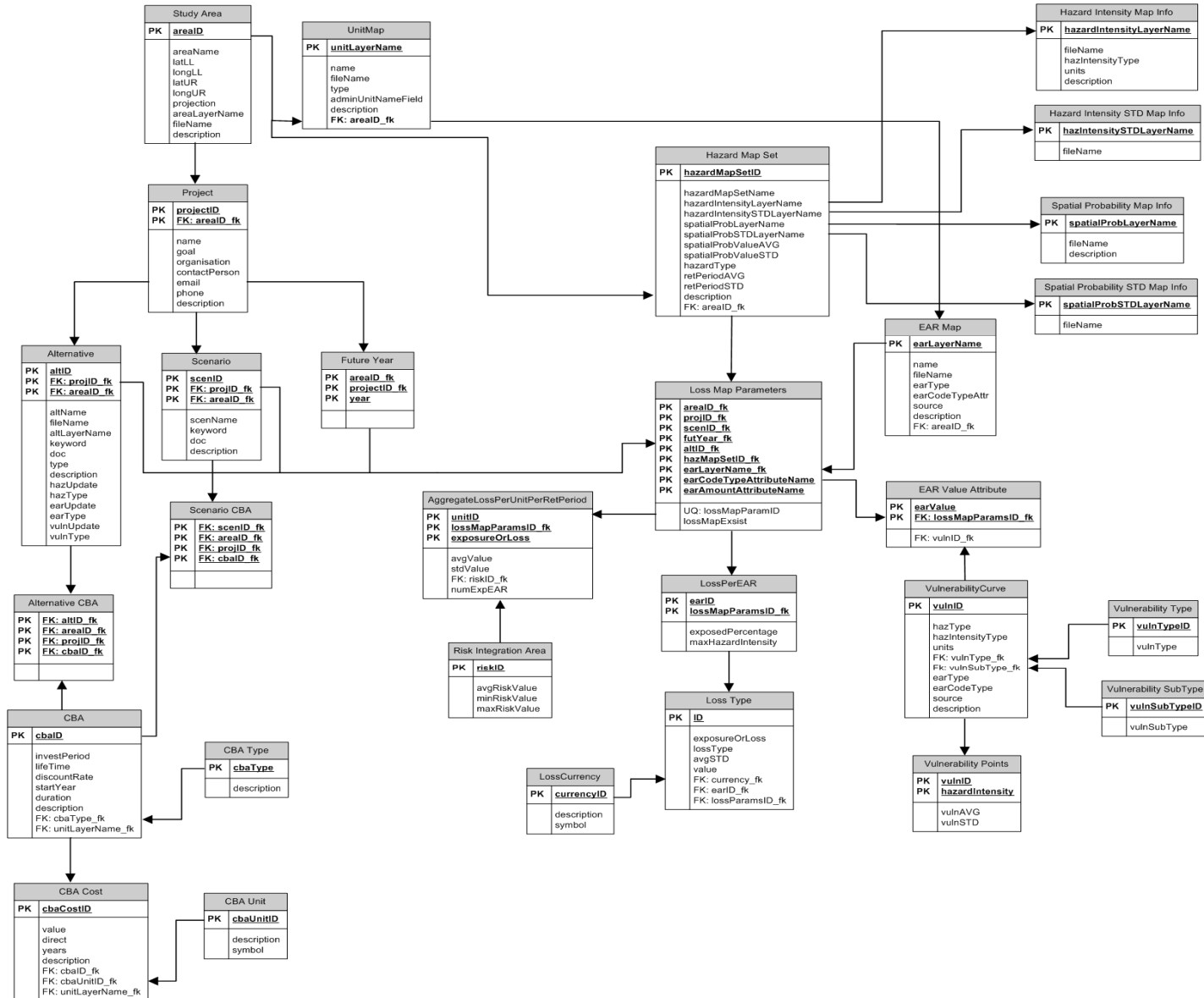
So far:



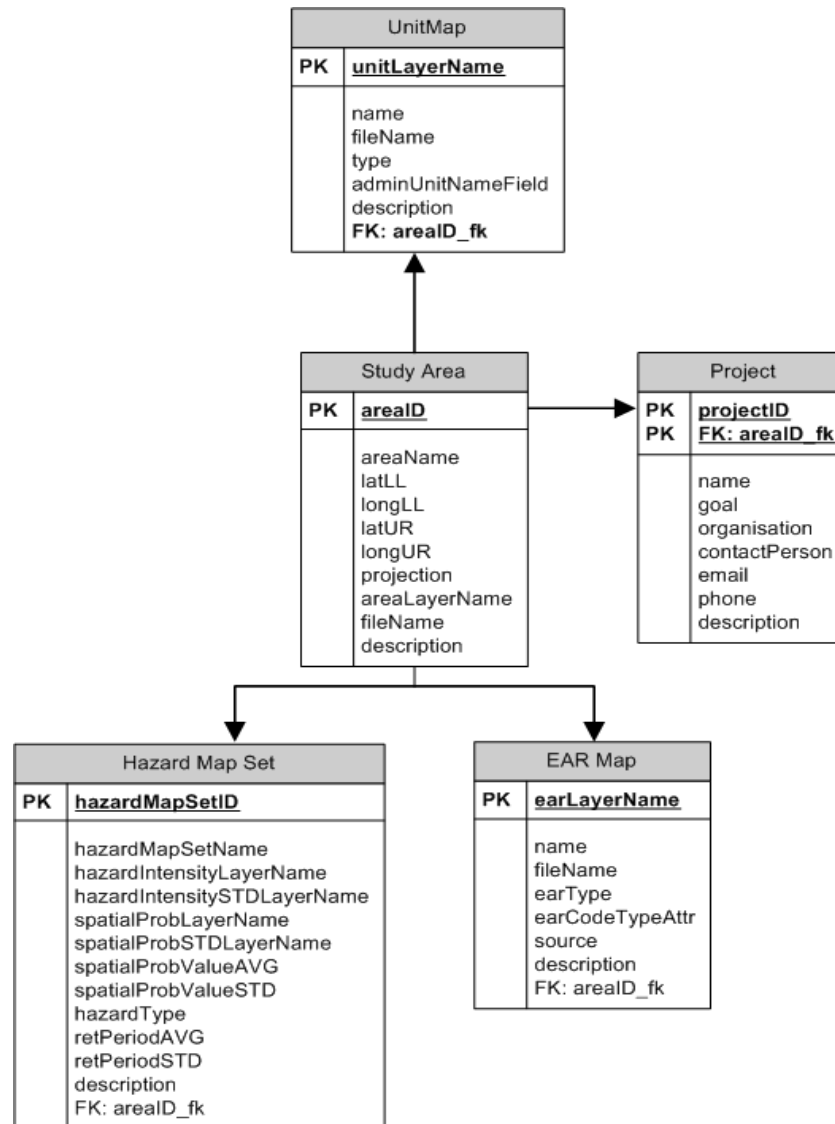
To do:



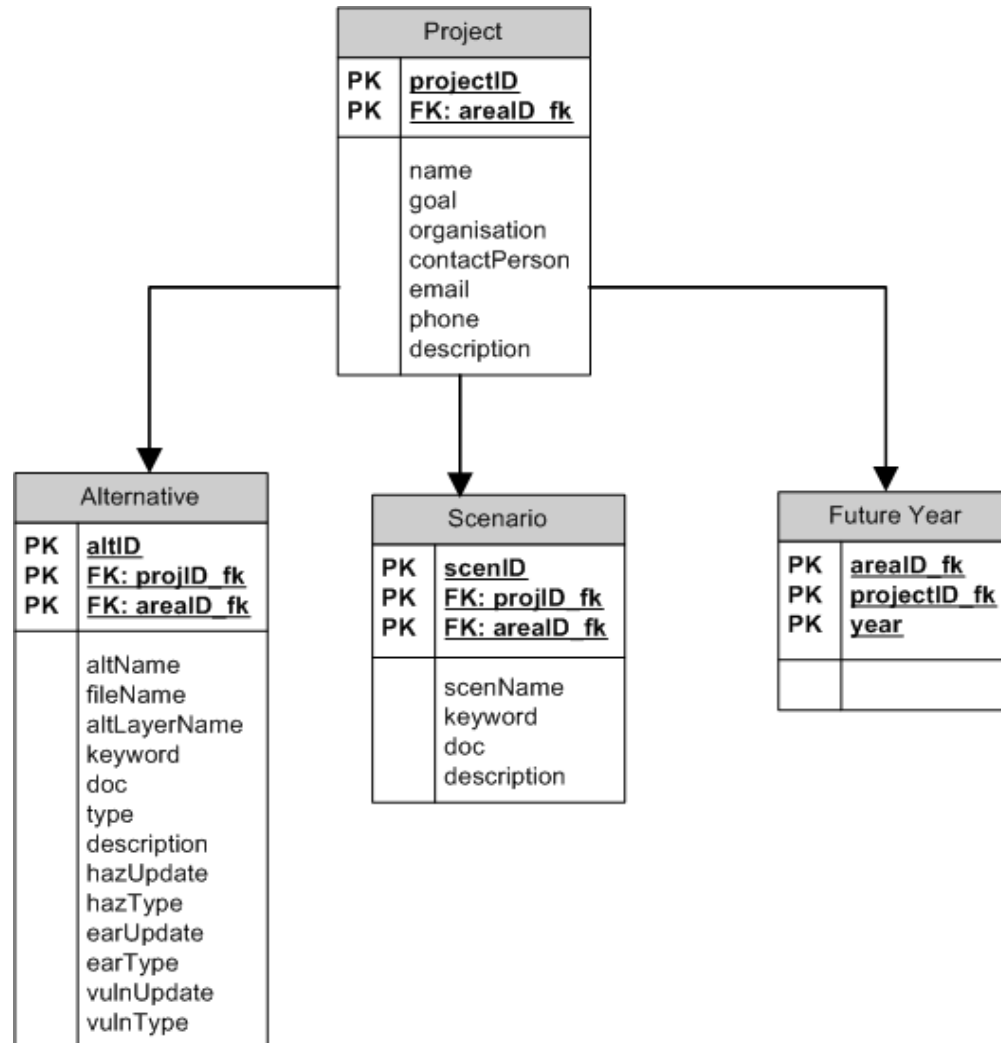
Functionality – DB Model



Functionality – DB Model



Functionality – DB Model



Functionality – Modules Implementation

- Study Areas
- Admin Units
- Projects
- Alternatives, Scenarios, Future Years

- Hazard Map Sets, EAR Maps, Loss Parameters, Dashboard
- Vulnerability Curve
- Vulnerability Points

Functionality – Modules implementation

- Uploading (inserting) spatial data: rasters and vector data (shape files) to DB:
 - Hazard Intensity Layers & Hazard STD Layers
 - Spatial Prob Layers & Spatial Prob STD Layers
 - Admin Unit Layers
 - EAR Maps
- Module for direct uploading of vulnerability curves from a file
- Map/layer name generation module for naming spatial layers
- DB – Geoserver mapping

SDSS CHANGES

- <http://changes.itc.utwente.nl/CHANGES-SDSS>

Questions

